

# RemoteView

## Operator Interface Software Compatible with Woodward Control Platforms

### RemoteView

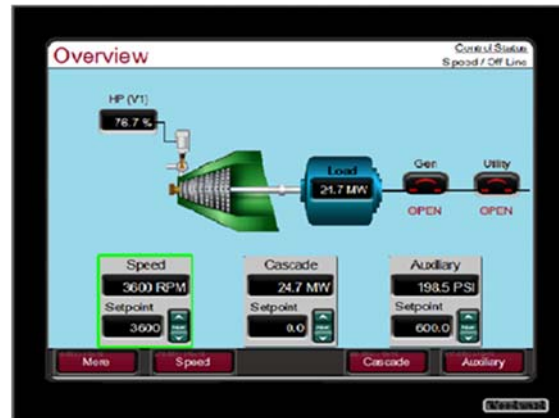
Woodward's RemoteView software program is a flexible software program that functions as a remote operator control panel and/or engineering station when used with one of Woodward's control platforms. Refer to below list of compatible Woodward controllers.

Once loaded onto a computer or touch panel, which is connected via Ethernet communications to a Woodward controller this software program uploads the specific Graphical User Interface (GUI) application program from the connected Woodward controller then functions as a controller GUI. Depending on the controller's specific GUI application program, loaded users can then use the RemoteView program to monitor, operate, tune, and or configure the control. Password-based login level security allows users to limit which functions and capabilities the remote panel user has access to.

For example, when the RemoteView program is used on a computer or touch panel connected to the popular Woodward 505 controller the GUI application program stored on each 505 controller is designed to emulate all the functions of the 505 control's front panel. Depending on the password based security level entered by the remote user they then have the capability to monitor, operate, service or configure the 505 controller from the remote touch panel or computer.

With the flexibility to be used as a full-time operator station or a special-purpose tool Woodward's RemoteView program allows users to access and manage their compatible Woodward control system as required. With this software program plant operators or engineers can graphically view operating inputs, vary control set points, issue operational commands, and view trends and event logs of turbine, and control parameters.

Since the RemoteView software program requires limited computing resources it can easily run on most PCs or touch panels. Alternatively, it can be installed on a permanent computer in a control room for true operator interface, or on a rugged industrial touch panel mounted on the turbine deck for local operation, or on a laptop computer used by the instrumentation engineer for troubleshooting.



- Functions as an:
  - Operator Control Panel
  - Engineering Workstation
- No license required for use less than 2 hours
- Graphical Screens
- Alarm/Trip Log with Time Tagging
- Real-Time Trending Screens
- Displays Turbine / Compressor Operating Parameters
- Embedded Password Security
- Automatic Screen Selection Based on Control Configuration
- Multilingual Capability
- Remote Terminal Capability

## Compatible Woodward Controllers

Compatible Controllers	Customizable by User
Peak200	No
505D / 505-XT (2016 models)	No
Vertex / Vertex-XT	No
Flex500	* Yes
Flex505	* Yes
MicroNet+	* Yes

\* Using Woodward CIS Development Tool

The RemoteView program gives users access to any GUI application program stored on the control or on a local PC. Alternatively, different GUI programs can be created and stored for use and viewing by only operators and or only plant engineering & maintenance personnel. Once a specific GUI application program is loaded and its panel view options can be set to allow viewing of only the screens, a full mimic of the front panel display, or a simple minimal keypad (as shown below). This program also includes a slide bar tool to allow users to scale the view to the desired window size to meet their PC or touch panel screen size.



Figure 1. RemoteView Program Launch Tool



Figure 2. Available RemoteView Display Views

In addition to “Monitor Only” viewing modes, the RemoteView program supports any user level that is setup within the application program (performed via Woodward’s AppManager Service Tool program). For Woodward’s standard control offerings, these modes are Monitor, Operator, Service, and Configure. Refer to Figure 3.

**Note:** the Operator, Service, & Configure modes include password-based security, allowing only users with the correct password access to enter these special operational modes.

User Level	Description
● Monitor	View Only - commands inhibited
● Operator	Operational commands available
● Service	Additional settings, dynamic tuning, and Calibration Mode available
● Configure	Permission to enter Configuration Mode

Figure 3. User Levels Available in Woodward’s Standard Controllers

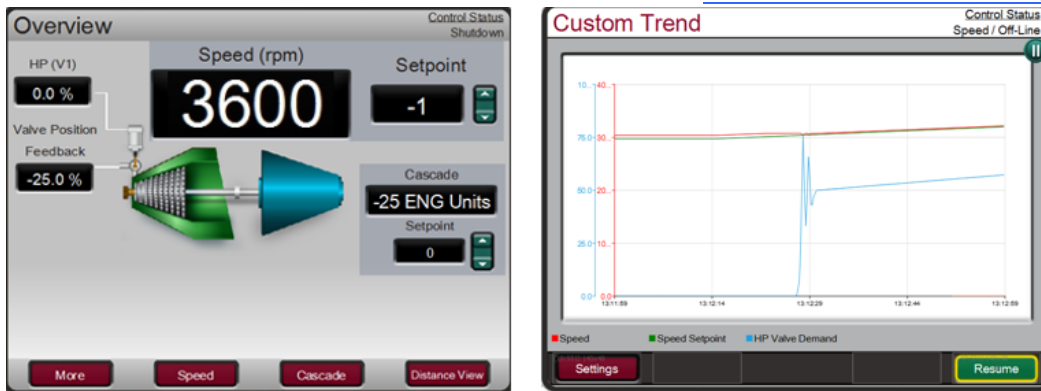


Figure 4. Example Peak200 Controller Based RemoteView Screens

## Licensing

The RemoteView software program can be used with or without a user license. The software program will shut down after 120 minutes and must be restarted without a user license. When a user license is purchased and correctly installed on the same computer running the RemoteView software program, this program will continue to operate indefinitely. This configuration allows users who simply want to use the RemoteView program as an engineering workstation or commissioning tool to do so without purchasing a license, and allows users who want to utilize this GUI software program as an operator control panel to do so by simply purchasing and installing a user license.

## RemoteView Application Development

RemoteView GUI application programs are created and modified using Woodward's Control Interface Studio (CIS) development tool. Depending on the specific Woodward controller users may or may not be able to use Woodward's CIS development tool to create or change the controls GUI application program. Woodward's standard-off-the-shelf controls (i.e. Peak200, 505, Vertex) utilize a standard and protected program, which is changeable only by Woodward. However, users utilizing Woodward's custom controllers (i.e. Flex500, Flex505, MicroNet+) can utilize Woodward's Control Interface Studio tool to create and modify GUI application programs for these respective control platforms. Refer to below section for specific development tool access and license ordering information.

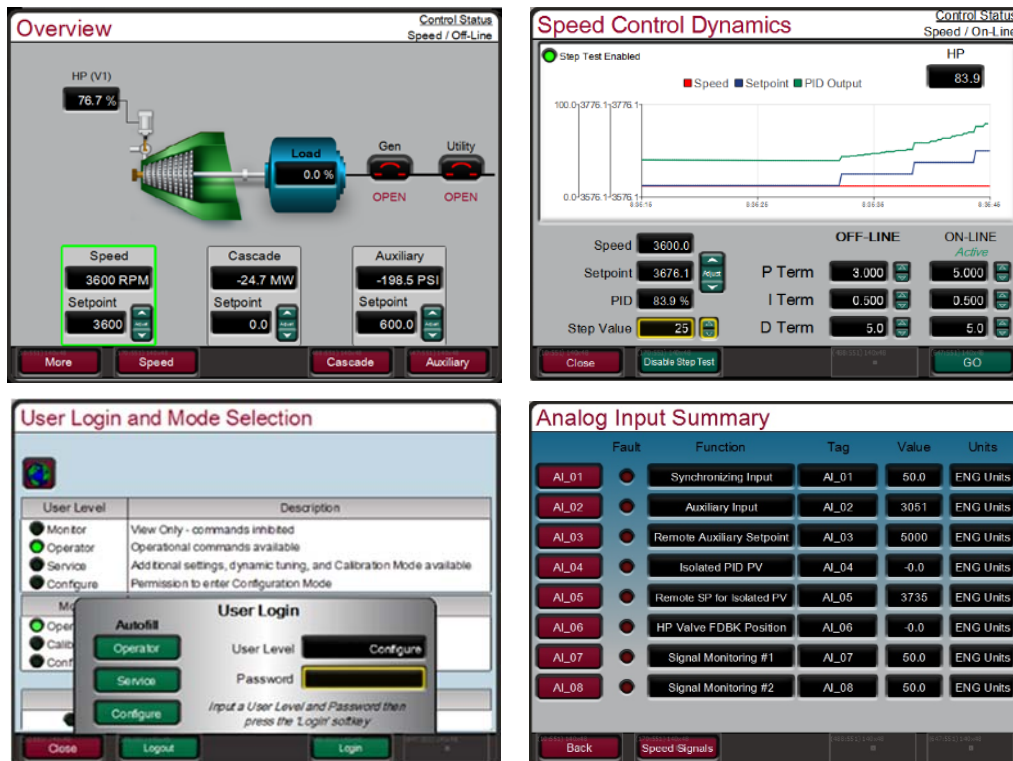


Figure 5. Example 505 Controller Based RemoteView Screens

## Features

The RemoteView program coupled with the control's GUI application program provides a user-friendly graphical user interface with the following feature set:

- Intuitive graphical screens
- Quick/Friendly navigation
- Security with multiple password levels
- Real-time 2-D plotting (i.e. steam or compressor maps)
- Real-time trending
- Alarm/trip status with first-out indication
- Input / Output channel monitoring
- Can be loaded on computers or touch panels

## Hardware Requirements

The computer used should have a minimum of a Pentium® \* 233 processor with Windows® \*\* XP SP3, 64 MB RAM, 1.5 GB hard drive, 2 MB Video RAM, touch panel or other pointing device (mouse, etc.), keyboard, Video monitor with Super VGA (800 x 600) or higher resolution.

\* Pentium is a trademark of Intel Corporation

\*\* Windows is a trademark of Microsoft Corporation

## Program Access & Ordering Information

Woodward's RemoteView software program can be accessed and uploaded free of charge from Woodward's Software download website: [www.woodward.com/software.aspx](http://www.woodward.com/software.aspx)

See your Authorized Woodward Channel Partner to purchase RemoteView User License: 8928-5311.

See your Authorized Woodward Channel Partner to purchase Control Interface Studio Developer's License: 1796-3131.

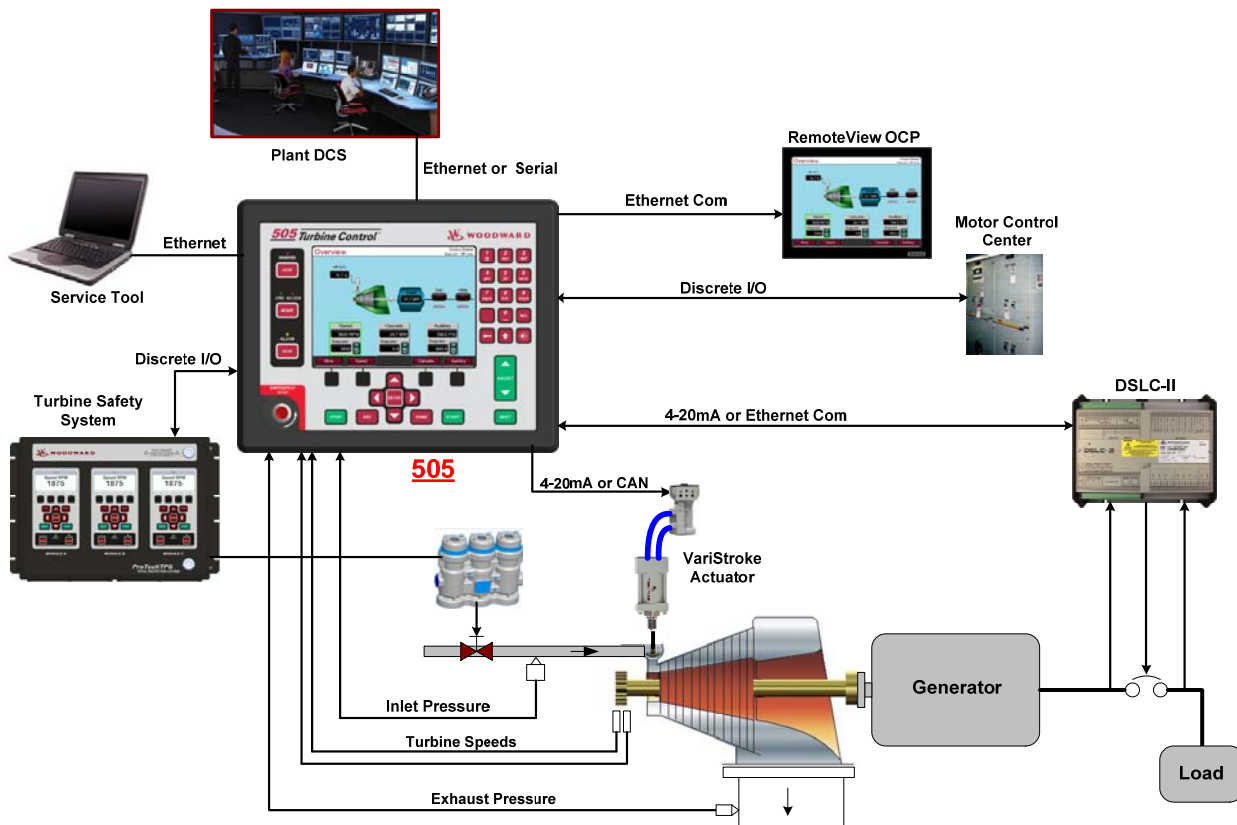


Figure 6. Typical RemoteView Application



PO Box 1519, Fort Collins CO 80522-1519, USA  
1041 Woodward Way, Fort Collins CO 80524, USA  
Phone +1 (970) 482-5811

Email and Website—[www.woodward.com](http://www.woodward.com)

Woodward has company-owned plants, subsidiaries, and branches, as well as authorized distributors and other authorized service and sales facilities throughout the world. Complete address / phone / fax / email information for all locations is available on our website.

This document is distributed for informational purposes only. It is not to be construed as creating or becoming part of any Woodward contractual or warranty obligation unless expressly stated in a written sales contract.

**Copyright © Woodward 2016, All Rights Reserved**

For more information contact:

